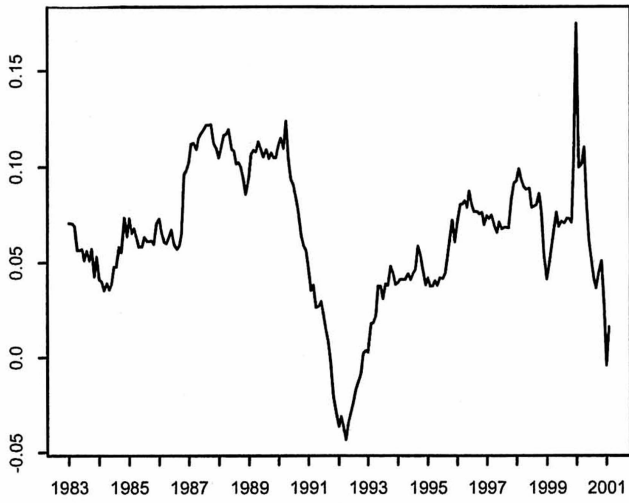


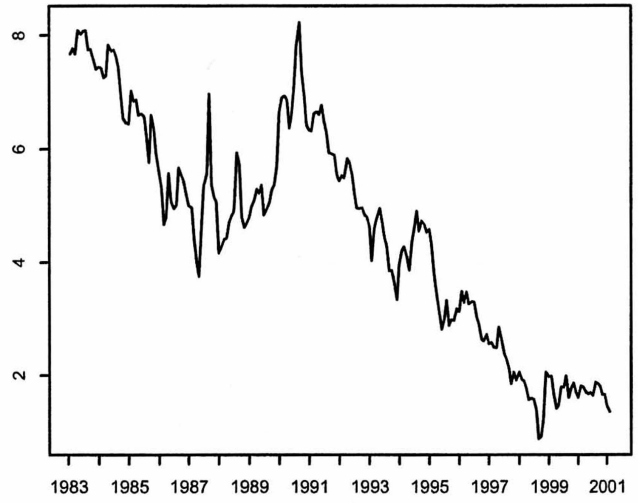
観測系列 (日本)

マネタリーベース(Monetary Base)

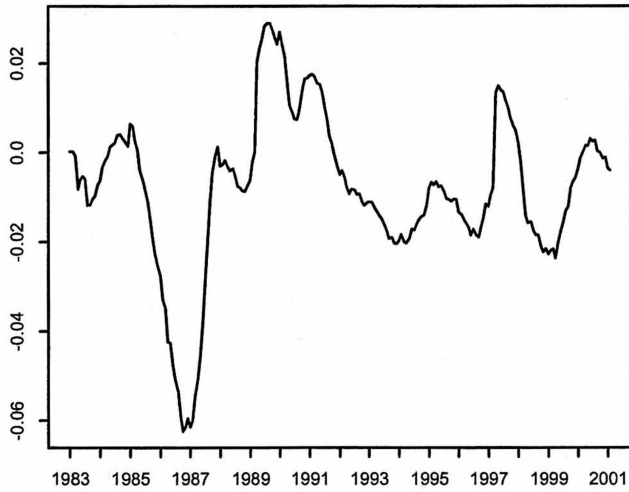


(前年同月比平均伸び率)

国債の利回り(10years bond)

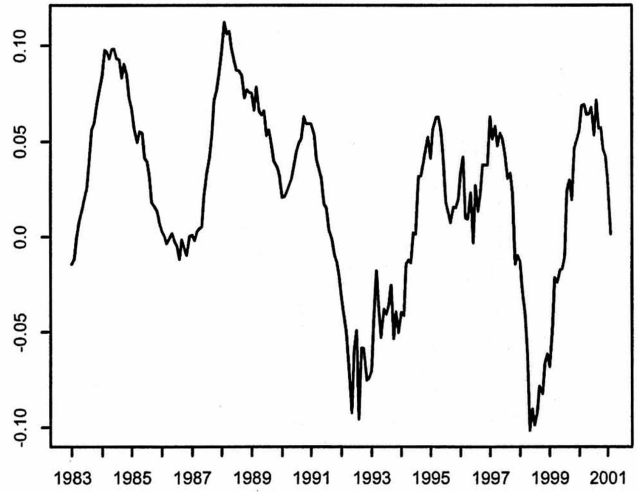


卸売物価(WPI)



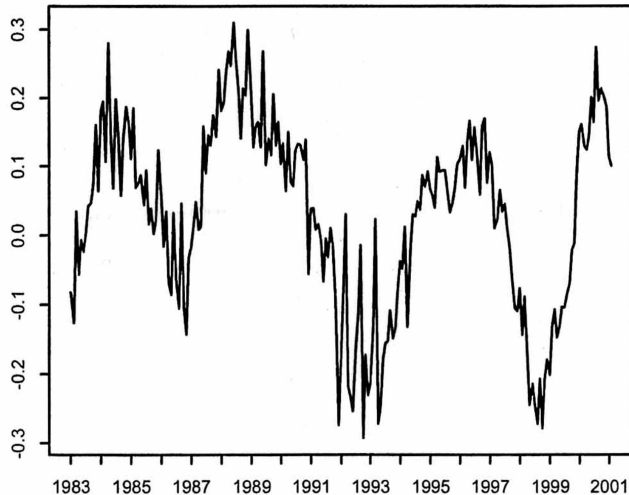
(前年同月比平均伸び率)

鉱工業生産指数(IIP)



(前年同月比平均伸び率)

機械受注(Machinery orders)



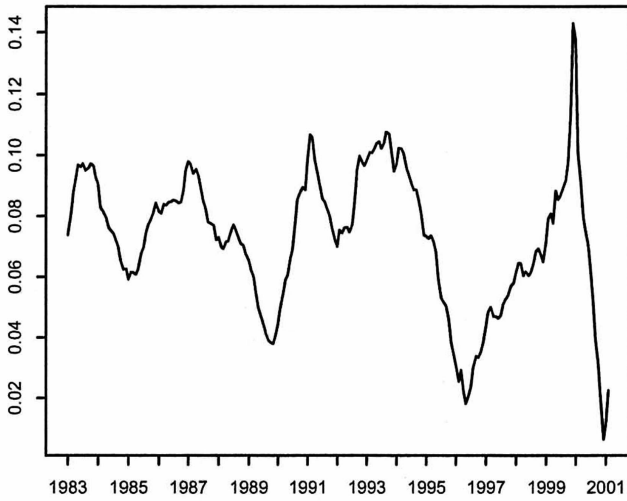
(前年同月比平均伸び率)

為替相場 (Dollar-Yen)



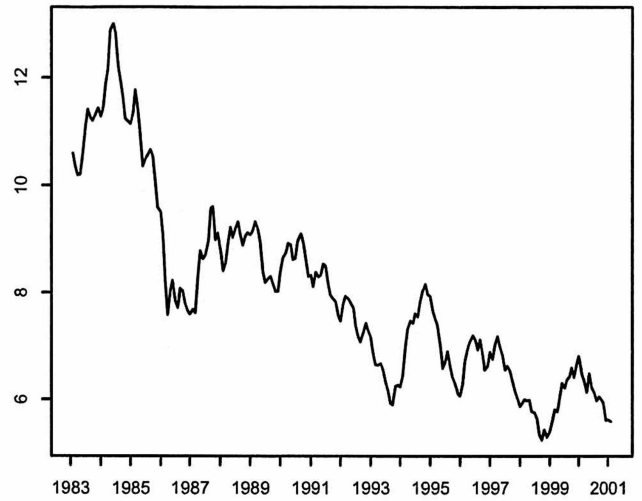
観測系列 (米国)

マネタリーベース(Monetary base)

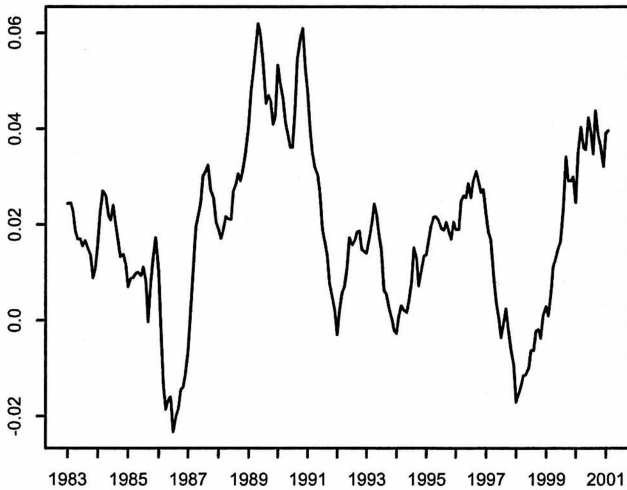


(前年同月比平均伸び率)

米国債の利回り (T-Bond, over 10Y)

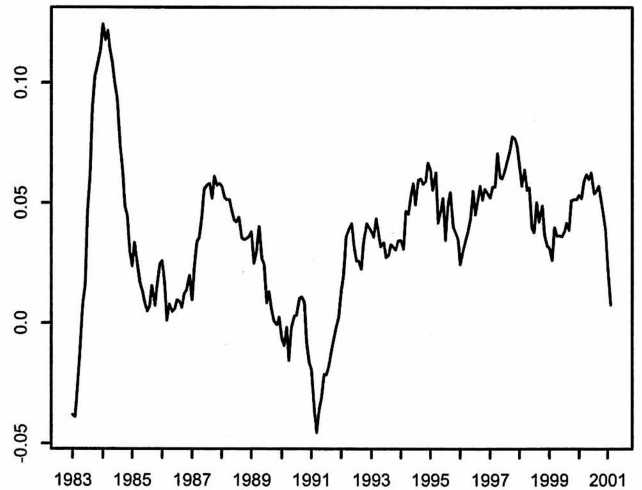


生産者物価(PPI)



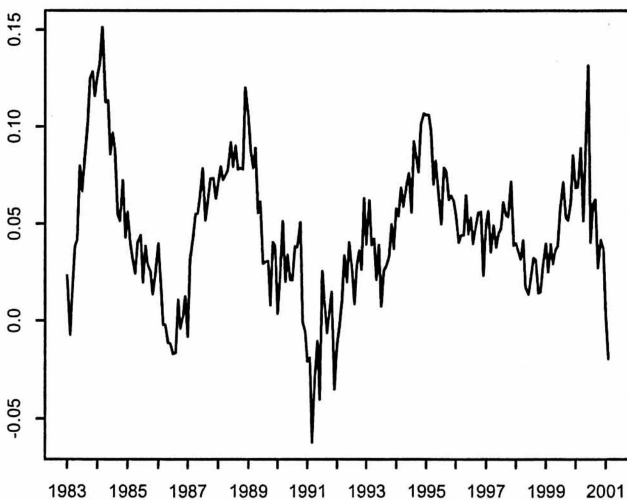
(前年同月比平均伸び率)

生産指数(IIP)



(前年同月比平均伸び率)

製造業新規受注(New orders)

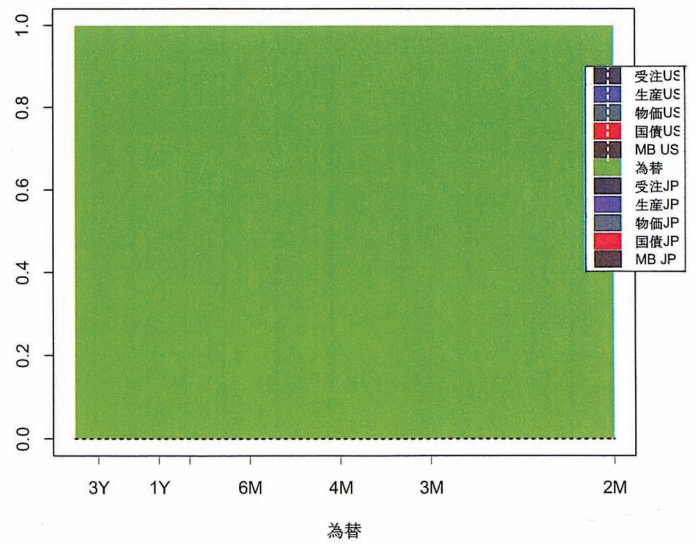
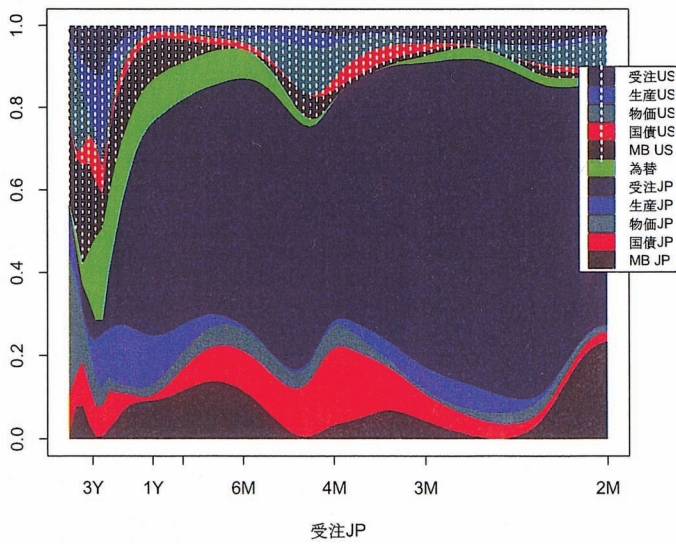
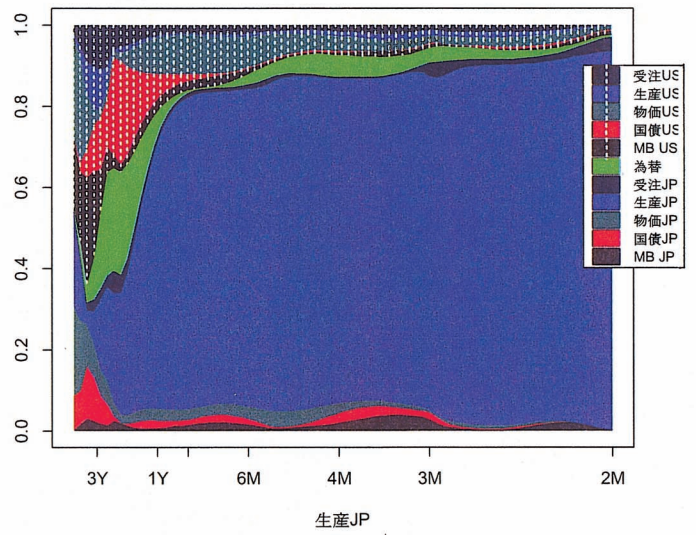
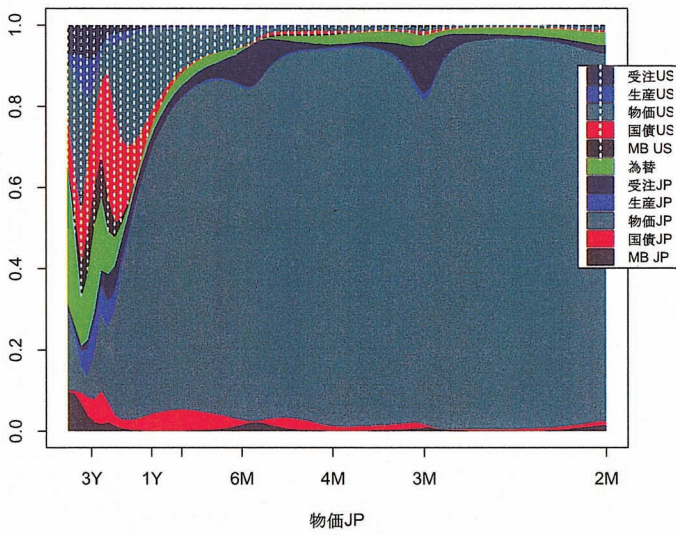
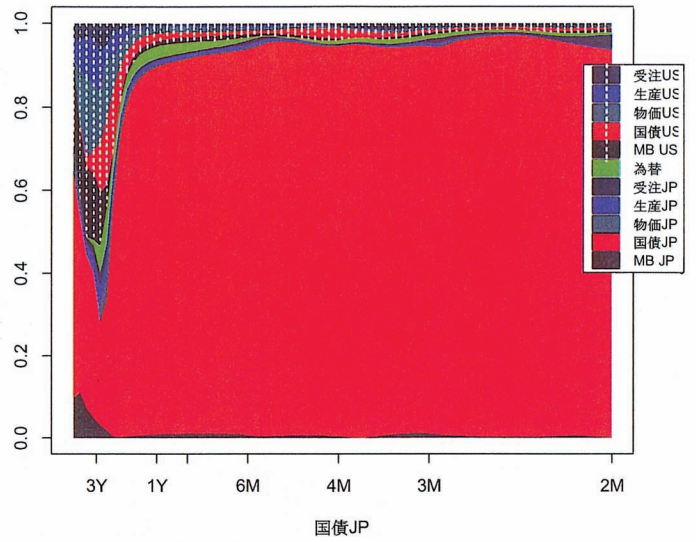
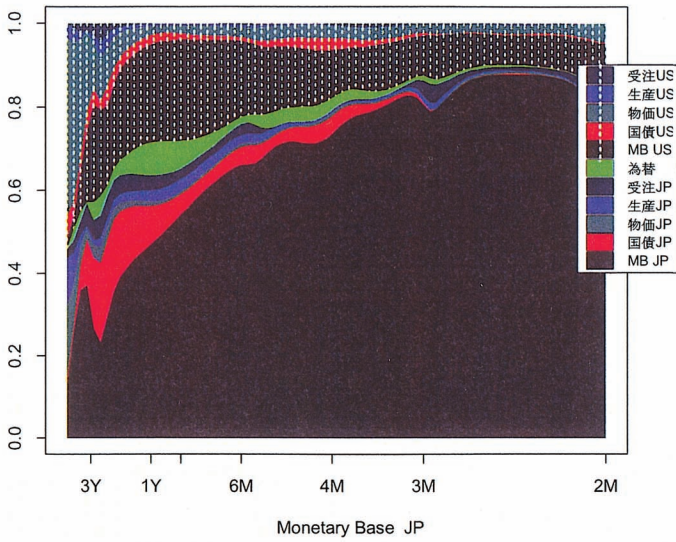


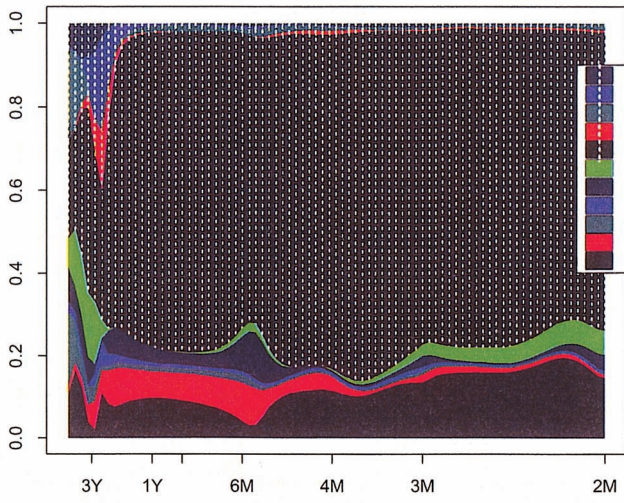
(前年同月比平均伸び率)

為替相場 (Dollar-Yen)

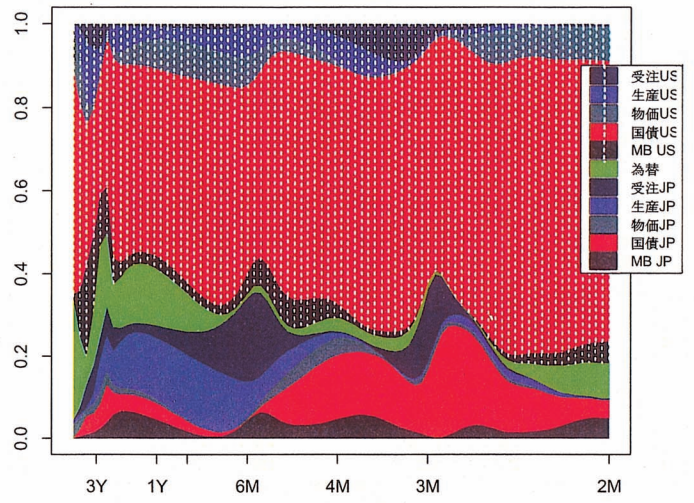


相対パワー寄与率 (日米モデル、2001.01)

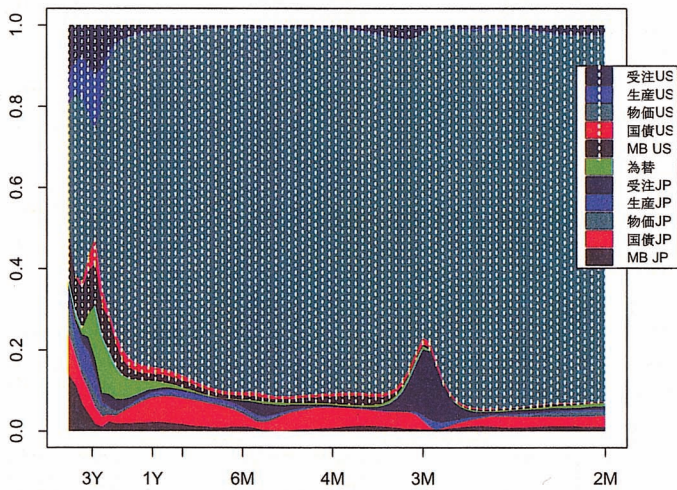




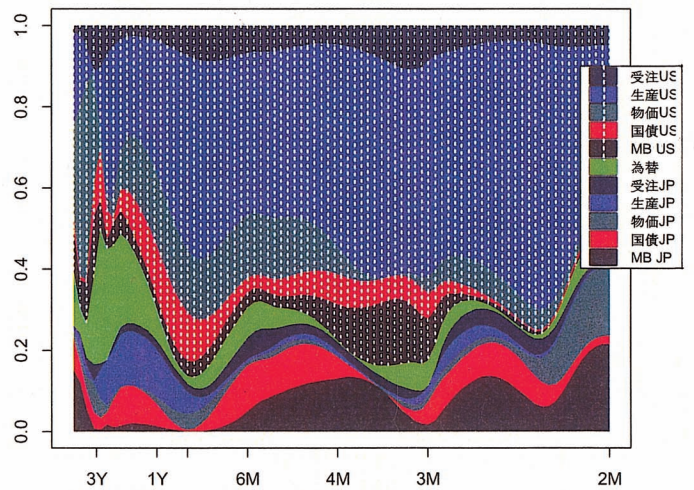
Monetary Base US



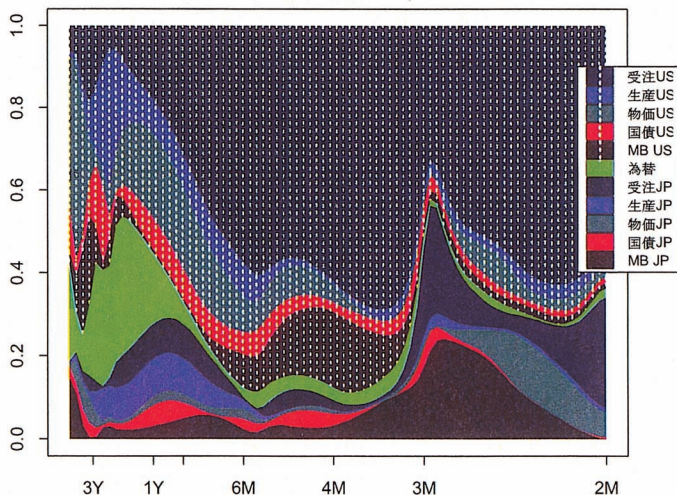
国債US



物価US



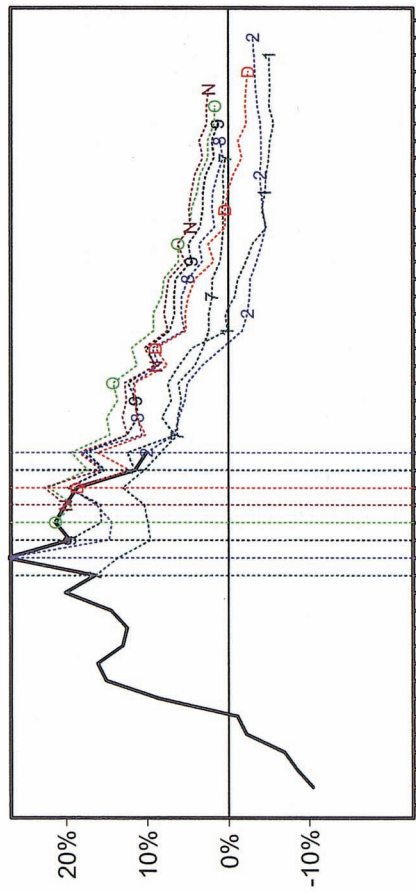
生産US



受注US

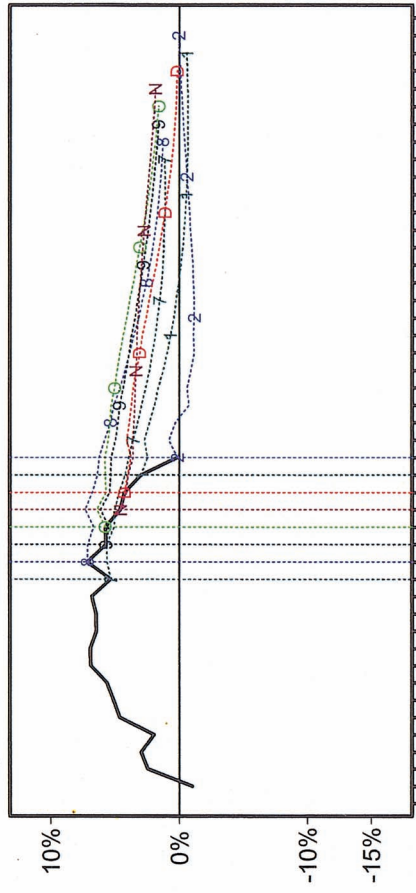
逐次予測 (日本)

2000 Jul. --- 2001 Feb.
JP Machinery orders (機械受注) JP model



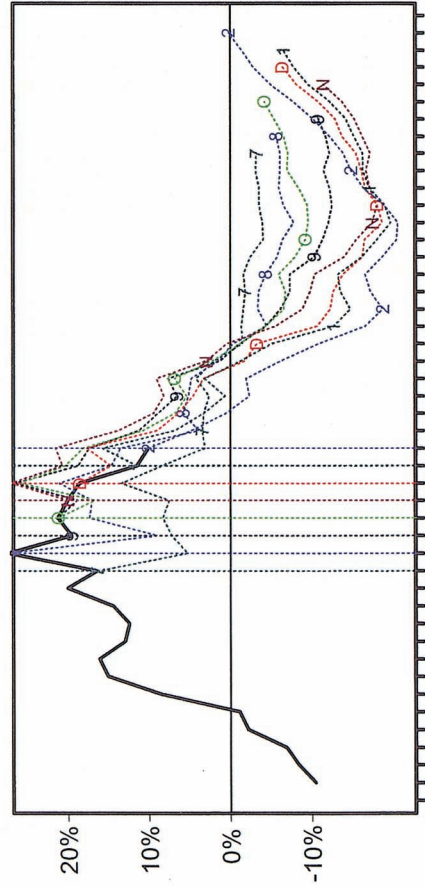
1999 Jun9 2000 Apr0 Sep0 2001 Feb1 Jul1 Dec1 2002 May2 Oct2 Mar3

2000 Jul. --- 2001 Feb.
IIP (生産指数・日本) JP-model



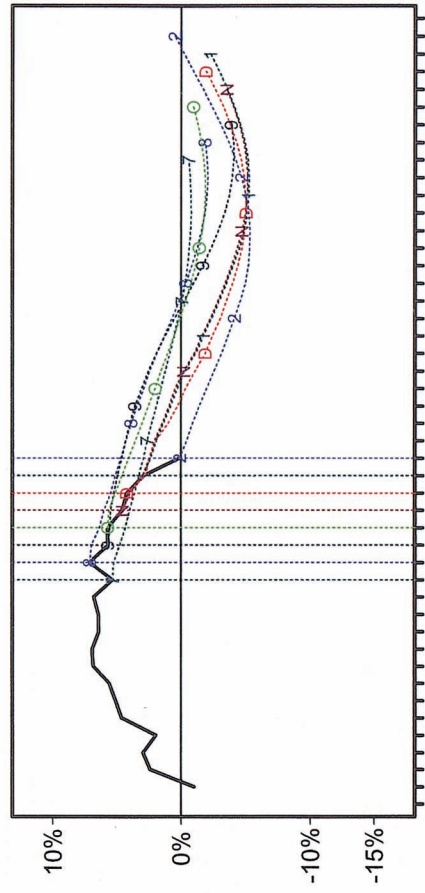
1999 Jun9 2000 Apr0 Sep0 2001 Feb1 Jul1 Dec1 2002 May2 Oct2 Mar3

2000 Jul. --- 2001 Feb.
JP Machinery orders (機械受注) JP-US model



1999 Jun9 2000 Apr0 Sep0 2001 Feb1 Jul1 Dec1 2002 May2 Oct2 Mar3

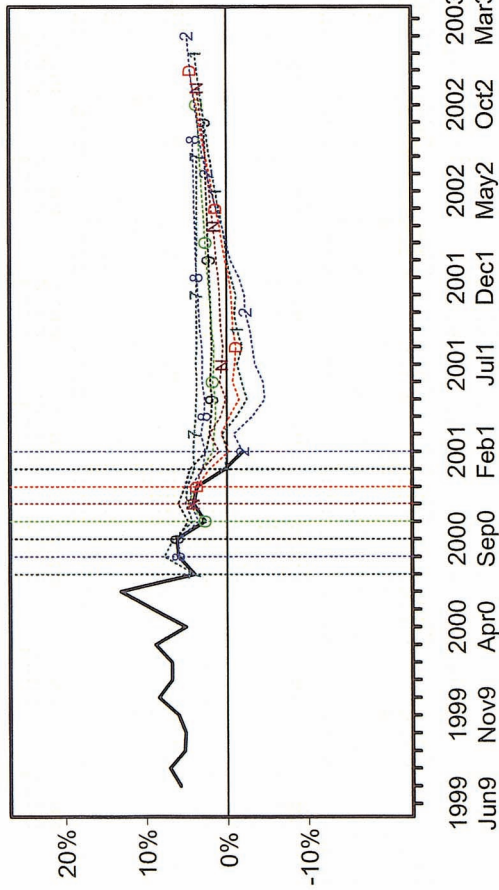
2000 Jul. --- 2001 Feb.
IIP (生産指数) JP-US model



1999 Jun9 2000 Apr0 Sep0 2001 Feb1 Jul1 Dec1 2002 May2 Oct2 Mar3

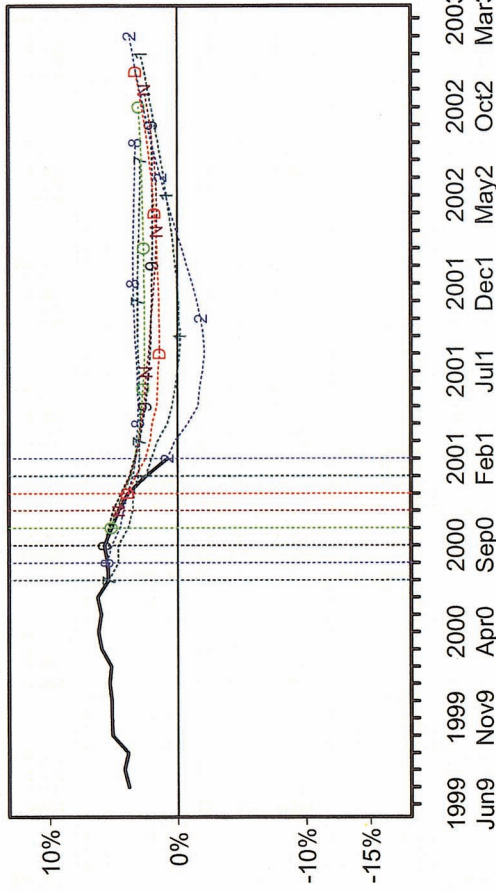
逐次予測 (米国)

2000 Jul. --- 2001 Feb.
US New Orders (米・新規受注) US model

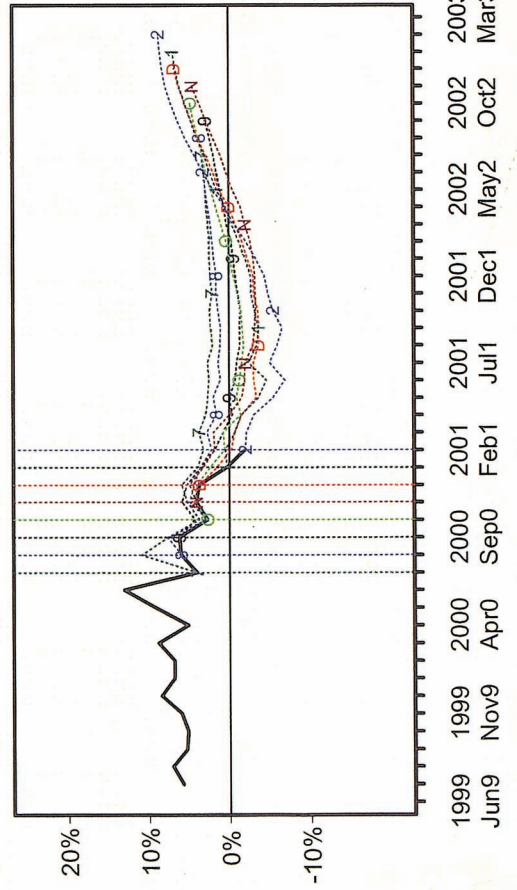


2000 Jul. --- 2001 Feb.

US IIP (米国・生産指数) US-model

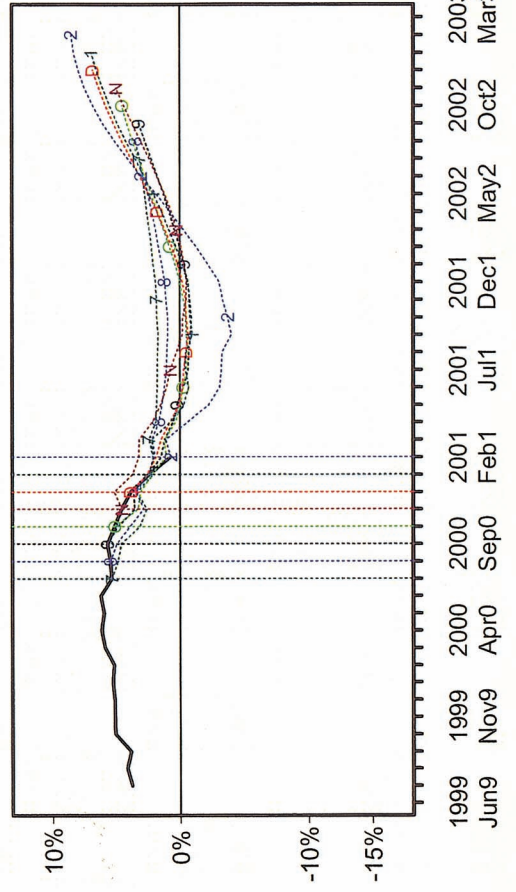


2000 Jul. --- 2001 Feb.
US New Orders (米・新規受注) JP-US model

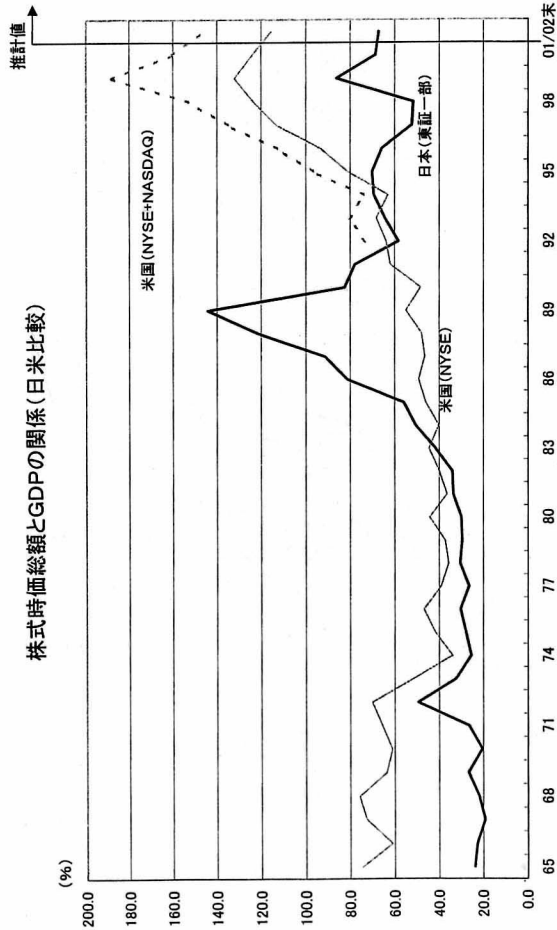


2000 Jul. --- 2001 Feb.

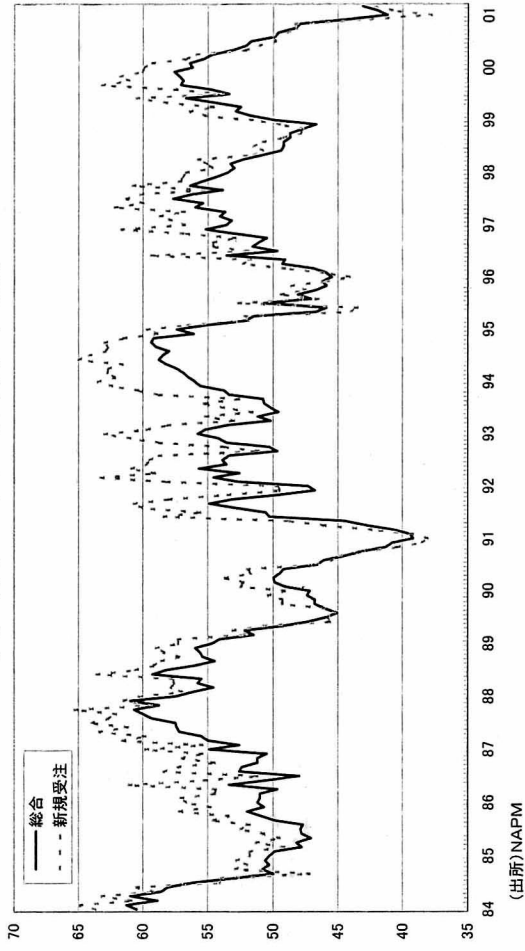
US IIP (米国・生産指数) JP-US model



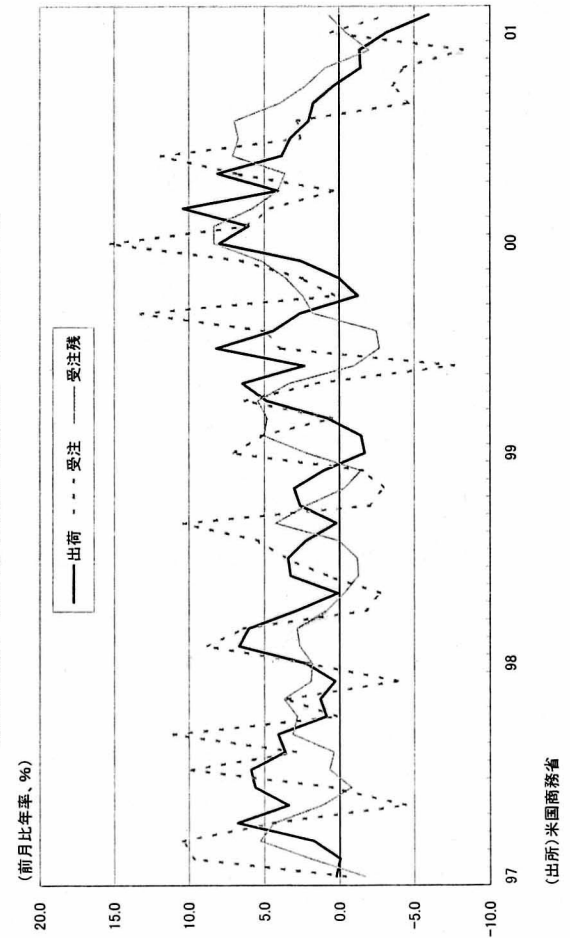
株式時価総額とGDPの関係(日米比較)



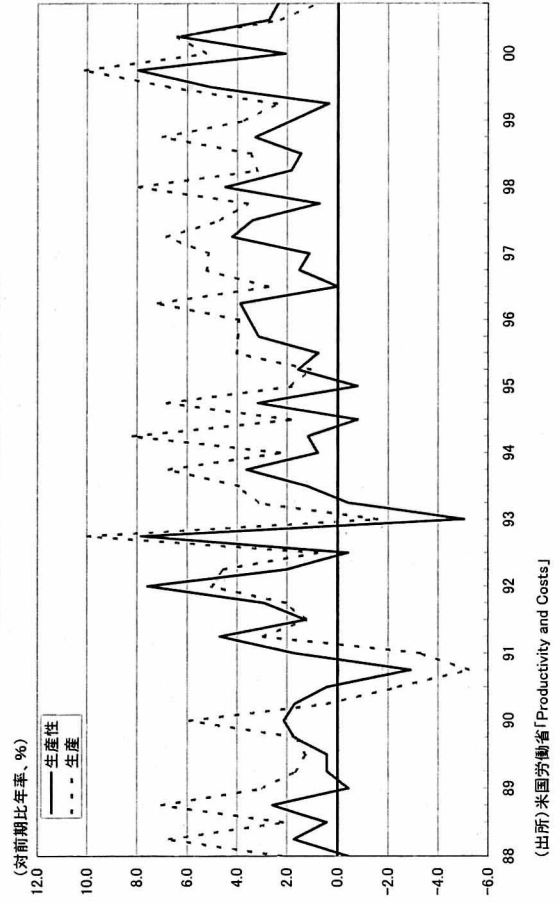
NAPM(National Association of Purchasing Management)によるDI(ディフュージョン・インデックス)の推移



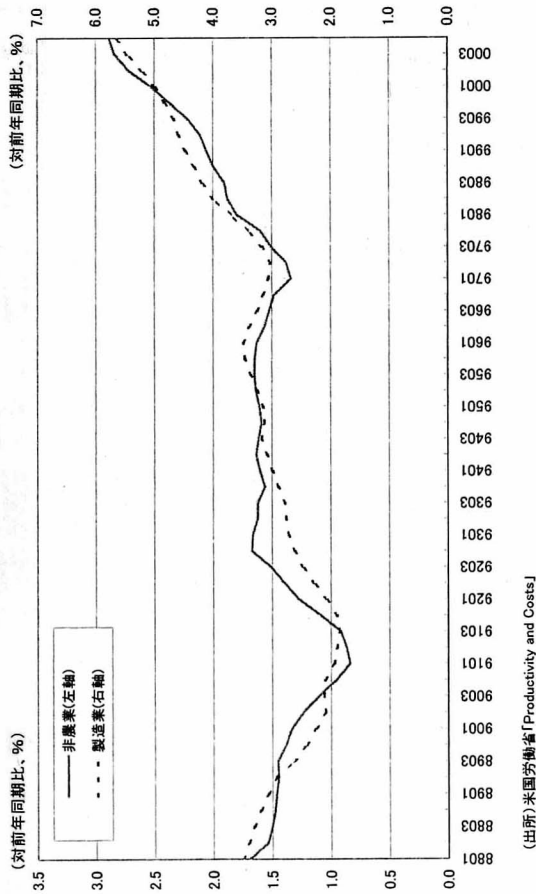
耐久財受注～資本財・非国防・除航空機～(3ヶ月移動平均)



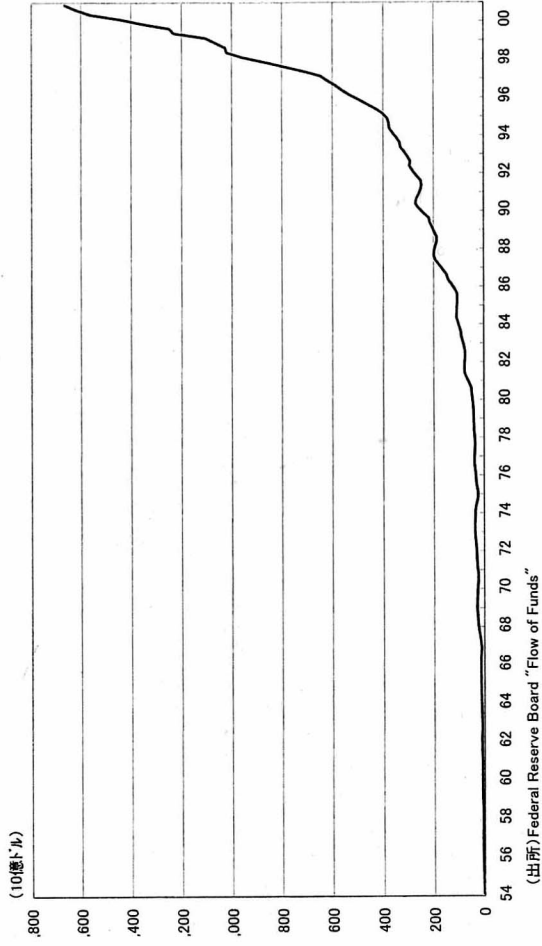
非農業部門の生産性および生産の推移



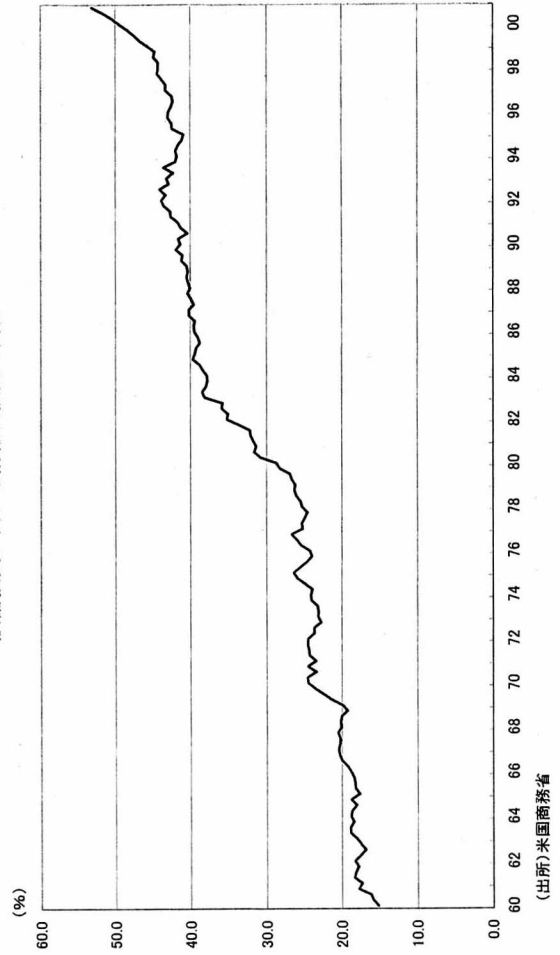
米国・部門別労働生産性(16期移動平均)



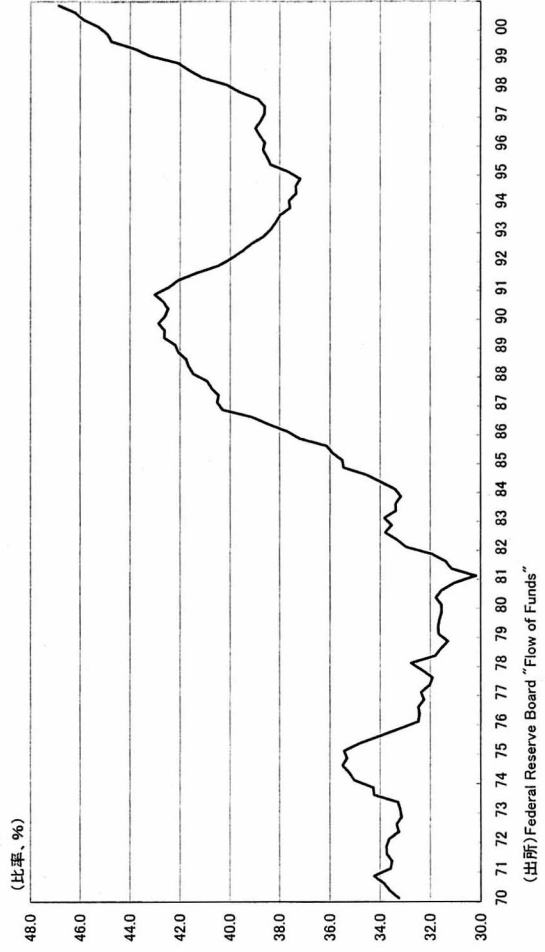
株式の外国人保有金額の推移(四半期移動平均)



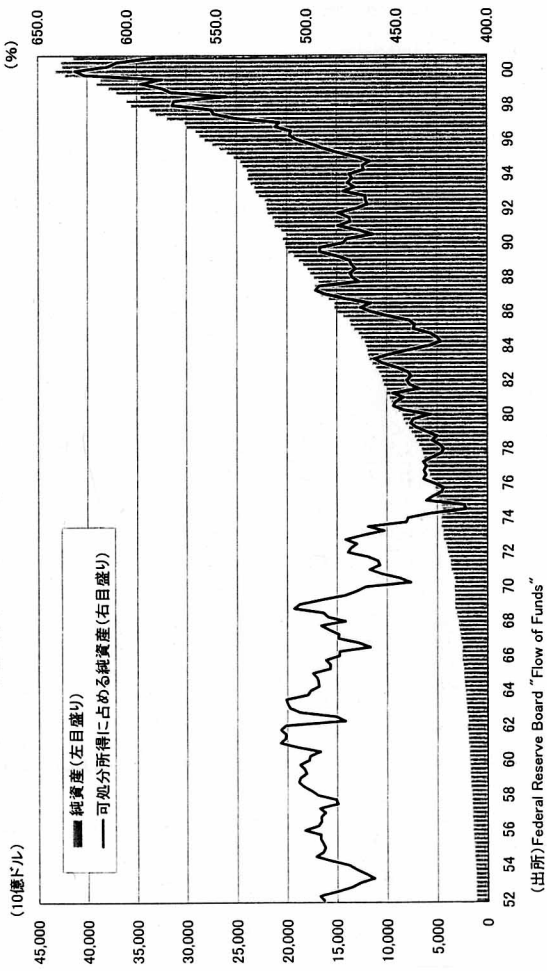
設備投資に占める情報化投資の割合



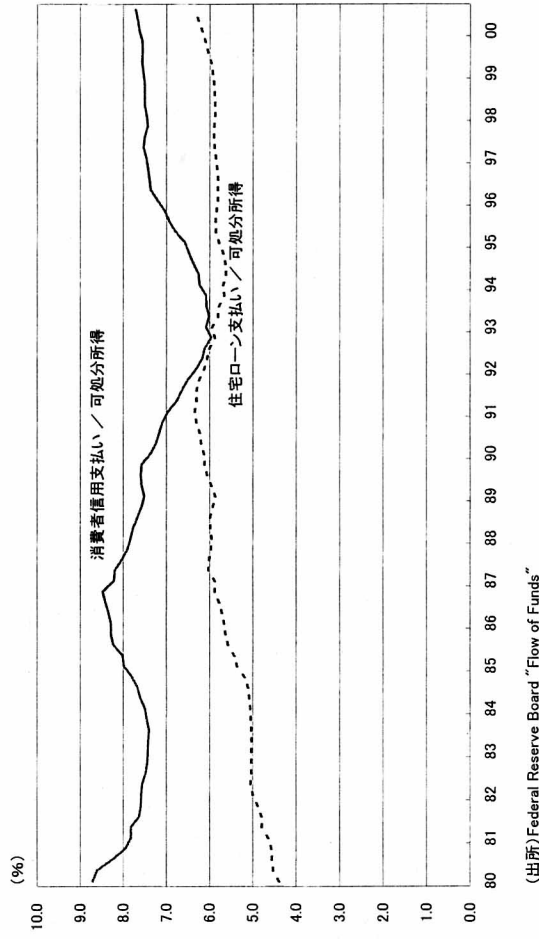
名目GDPに占める法人部門の負債



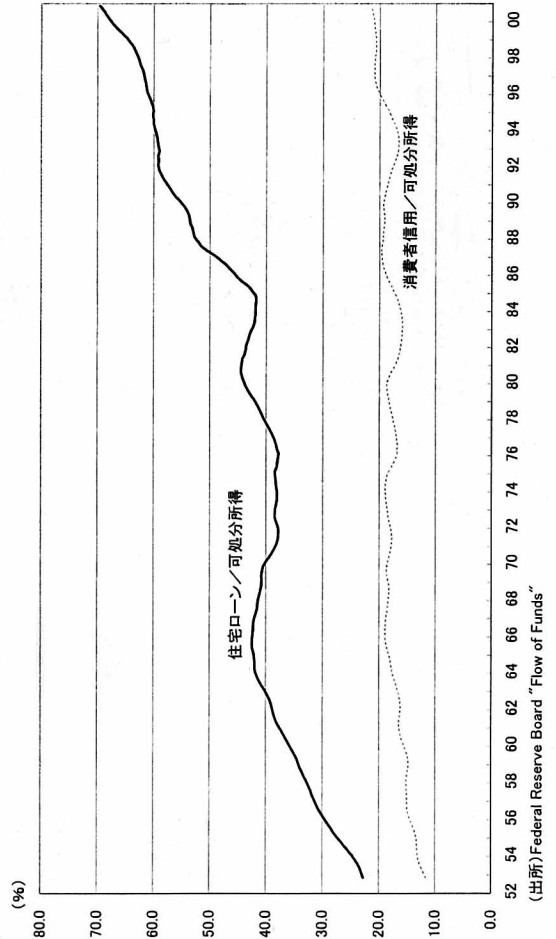
家計部門の可処分所得に占める純資産の割合



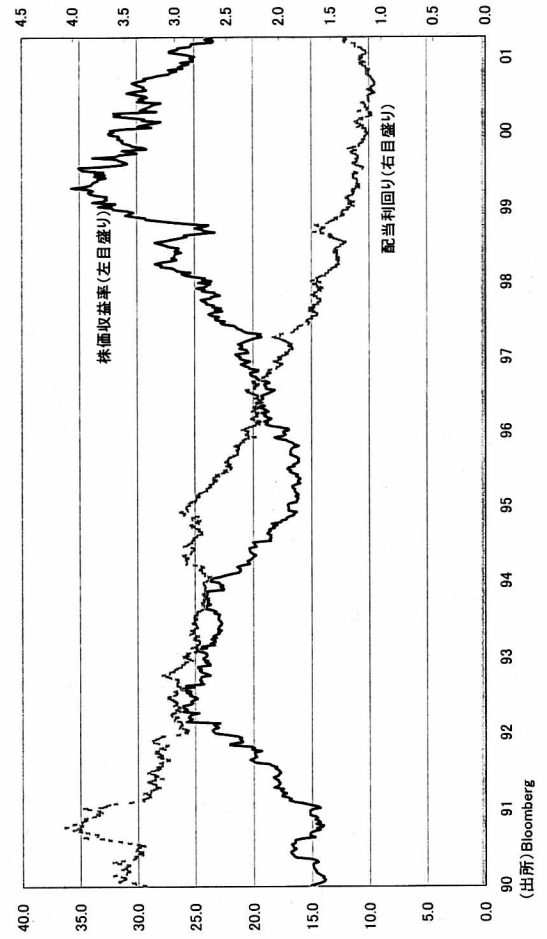
家計部門の可処分所得に占める負債返済の割合



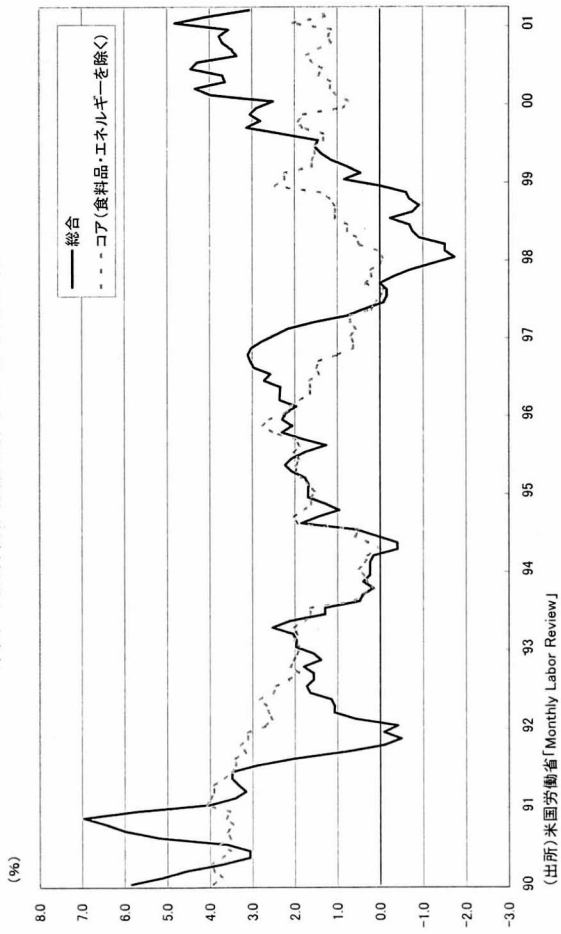
家計部門の負債の状況(4四半期移動平均)



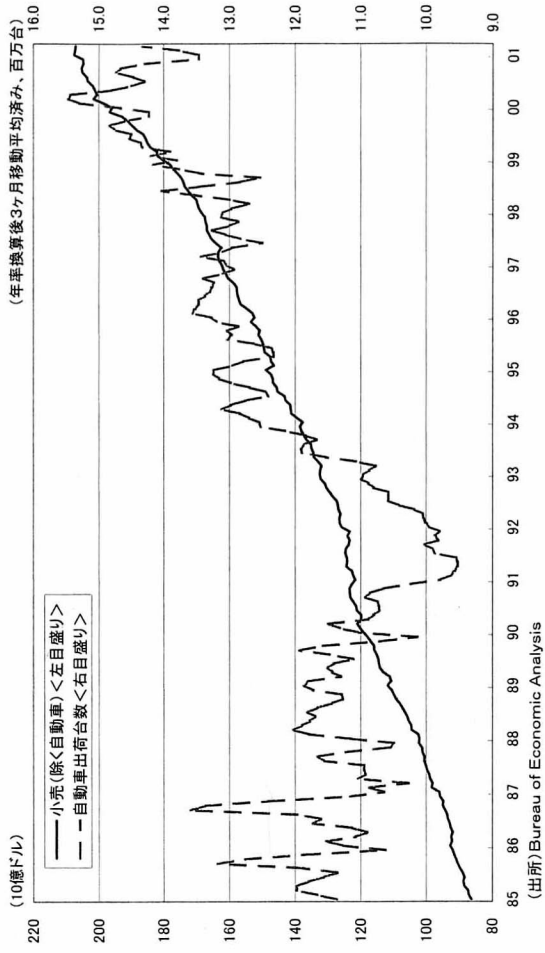
S&P 500指数のP/E、D/Pの推移



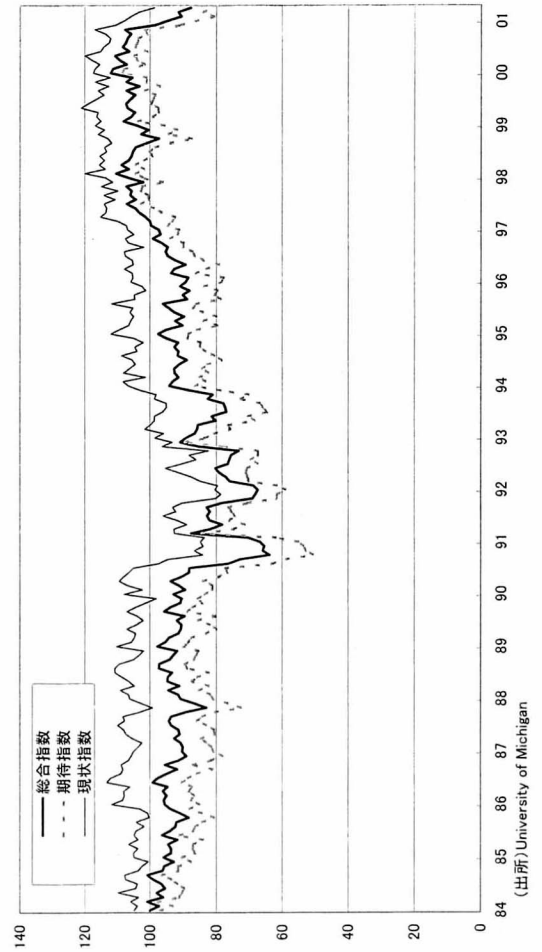
米国・生産者物価指数の伸び(対前年同月比)



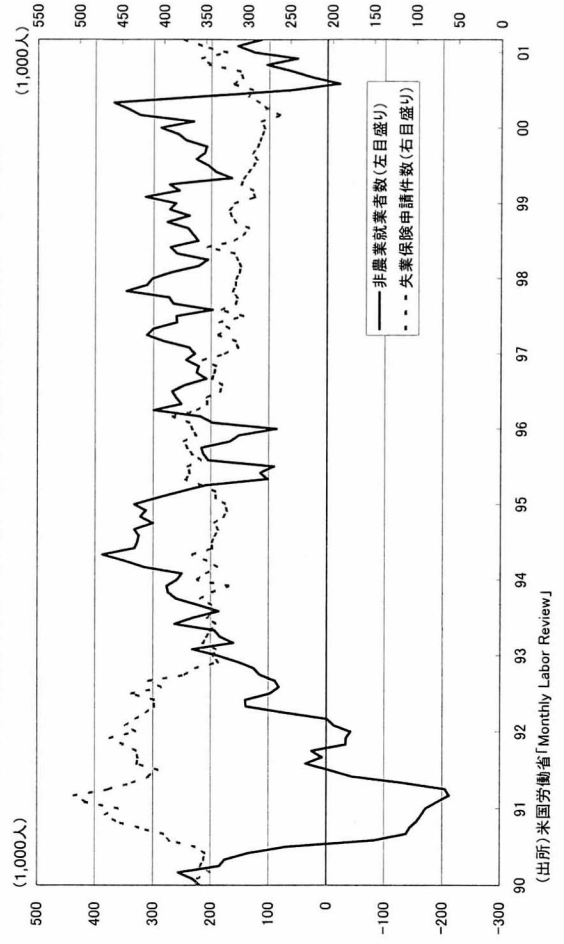
米国 小売売上と自動車出荷台数の関係



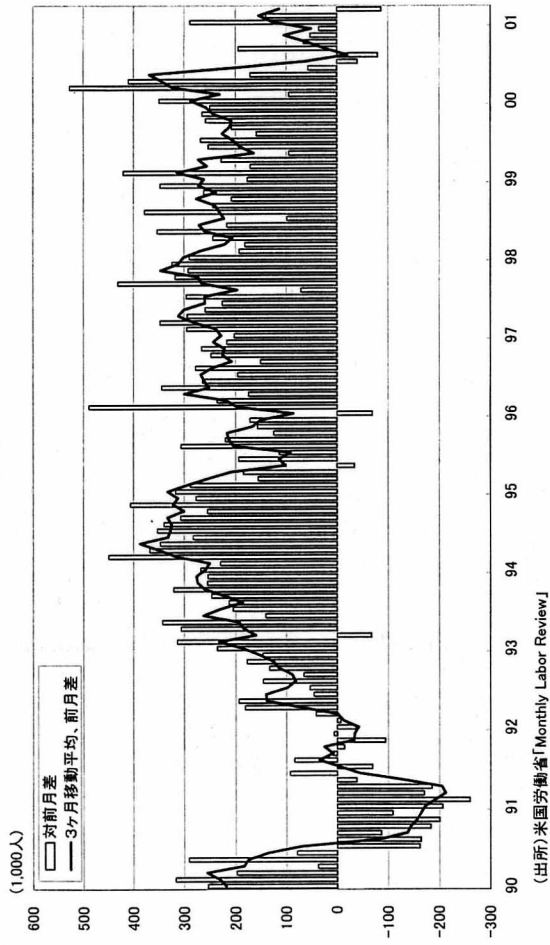
ミシガン大学消費者マインド指数



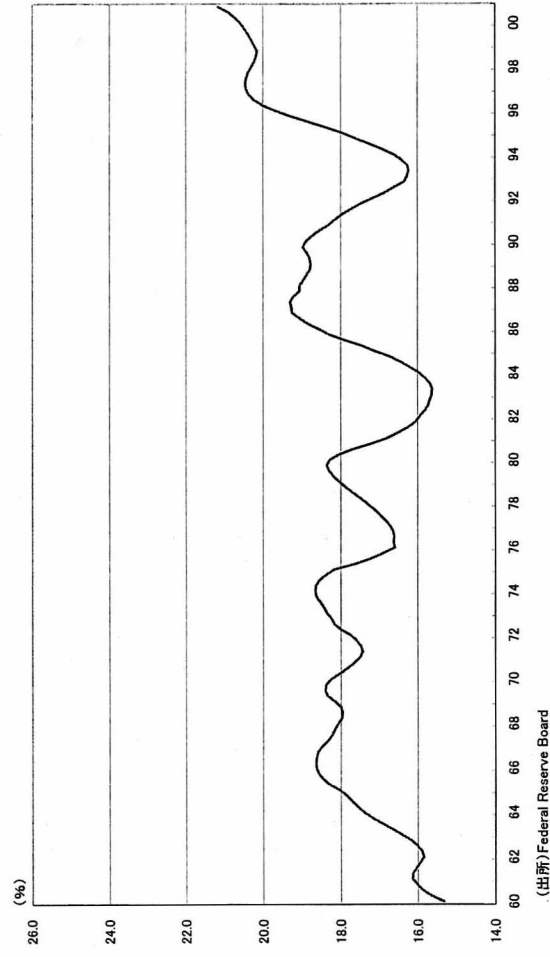
米国・非農業就業者数(対前月差)と失業保険申請件数(月平均)の推移



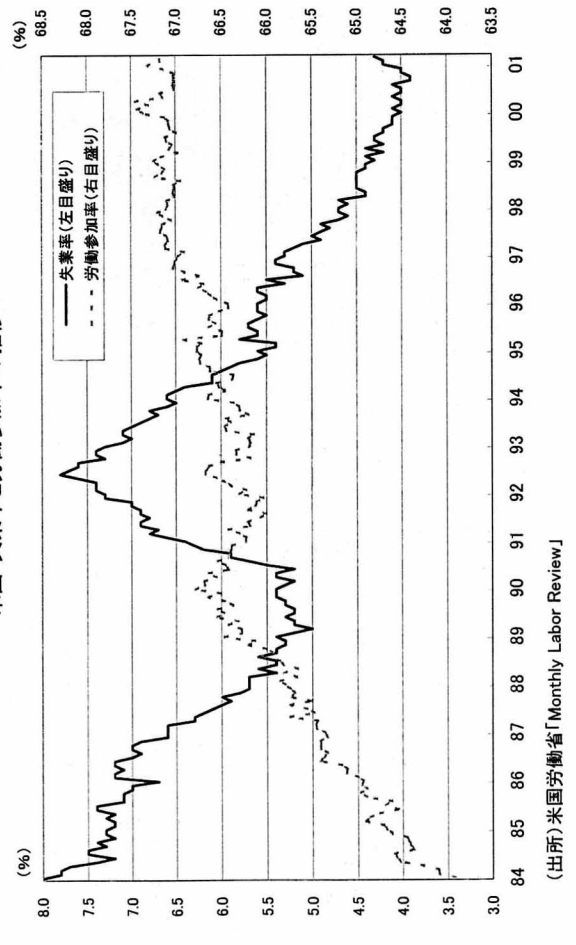
米国 非農業部門就業者数の変化



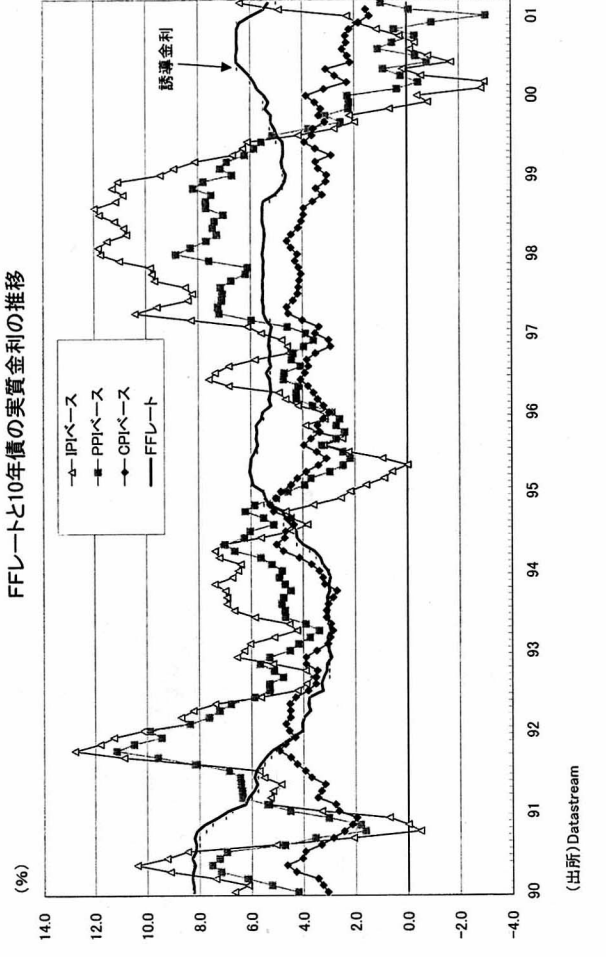
消費者信用/可処分所得(4四半期移動平均)



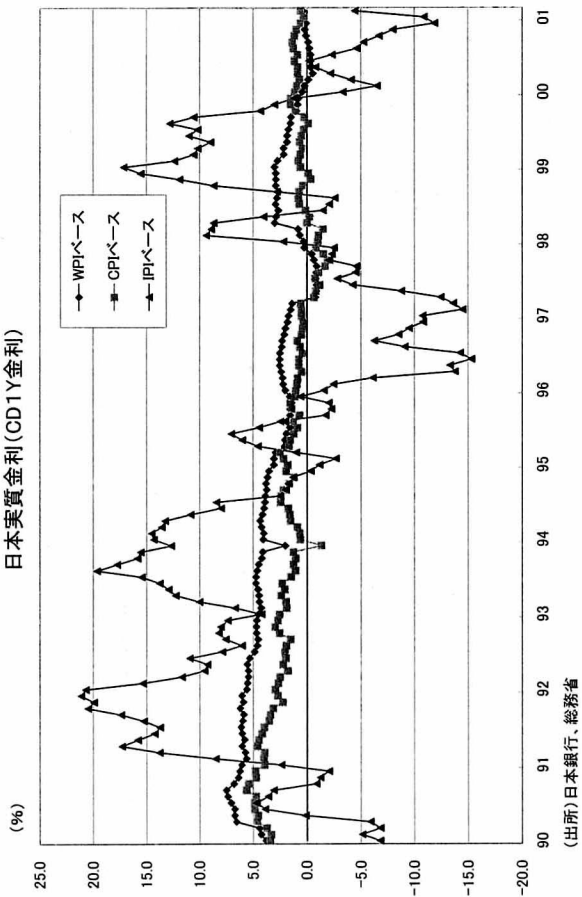
米国・失業率と労働参加率の推移



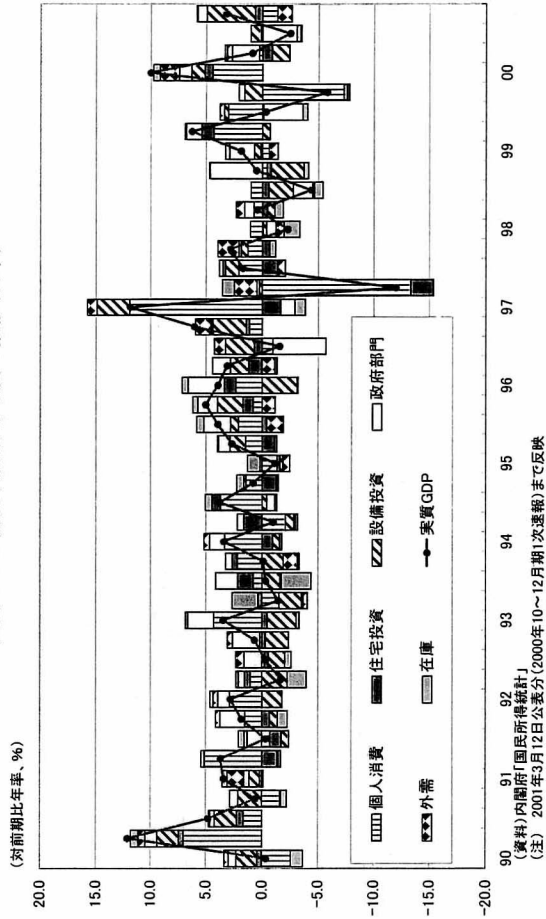
FFレートと10年債の実質金利の推移



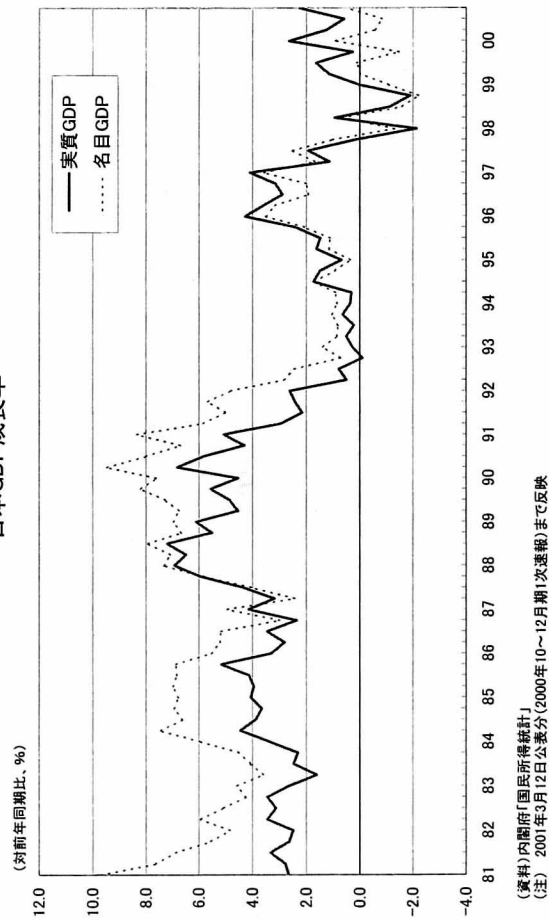
日本実質金利(GD1Y金利)



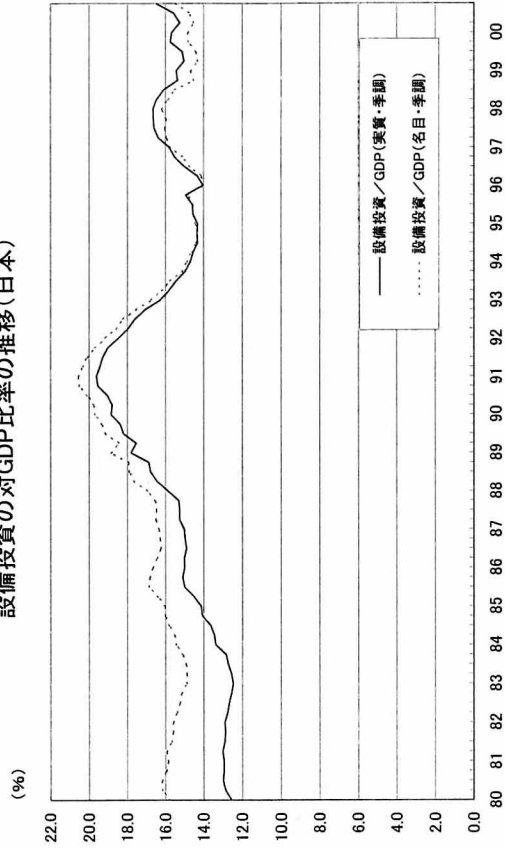
実質GDPの需要項目別寄与度の推移(日本)



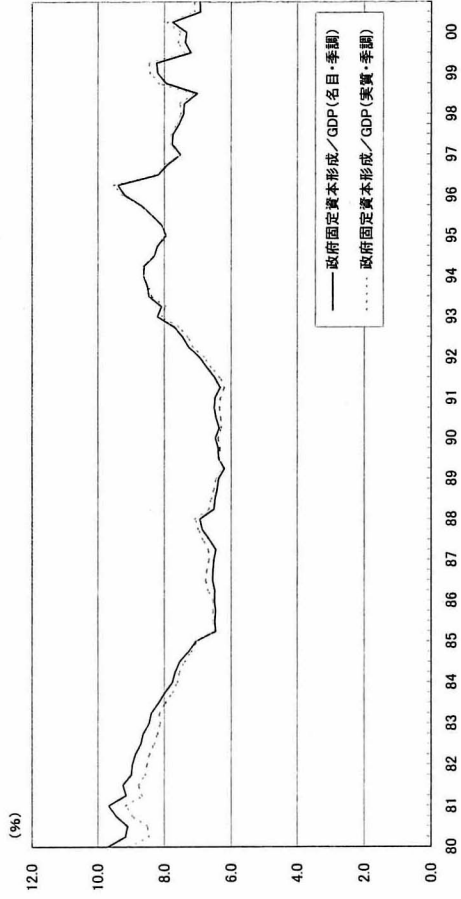
日本GDP成長率



設備投資の対GDP比率の推移(日本)

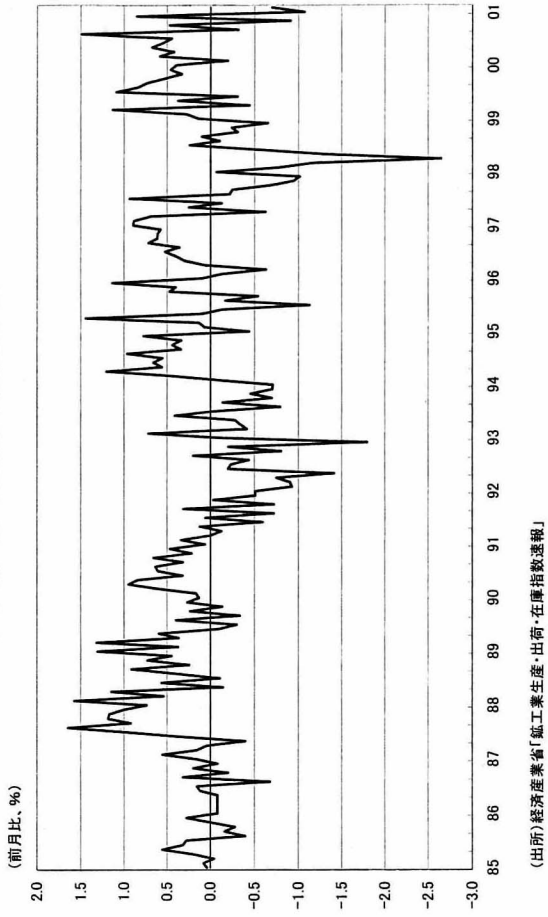


政府固定資本形成の対GDP比率の推移(日本)



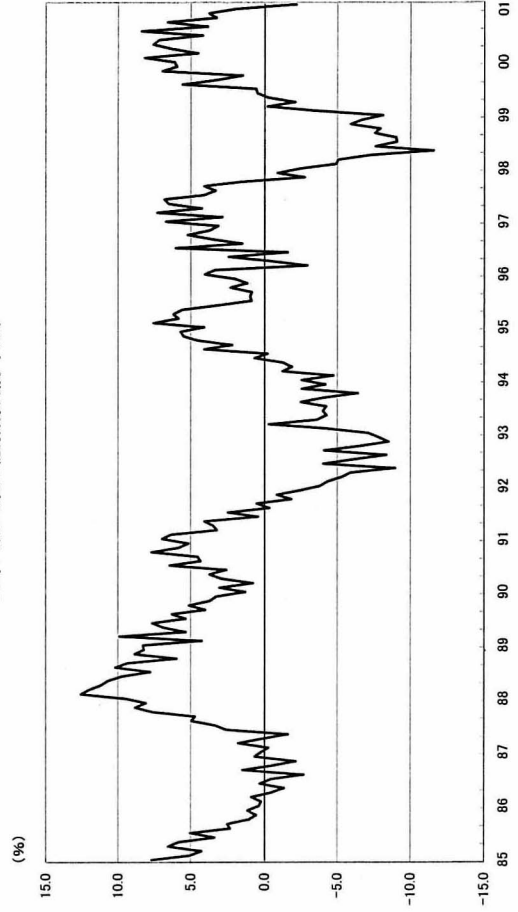
(資料)内閣府「国民所得統計」
(注) 2001年3月12日公表分(2000年10～12月期1次速報)まで反映

日本・鉱工業生産指数(3ヶ月移動平均)



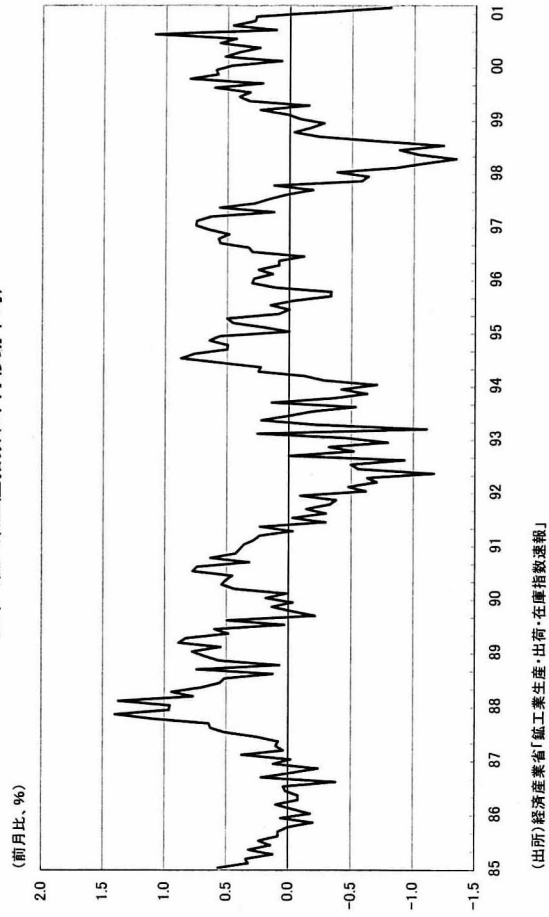
(出所)経済産業省「鉱工業生産・出荷・在庫指数速報」

日本・鉱工業生産指数(前年比)



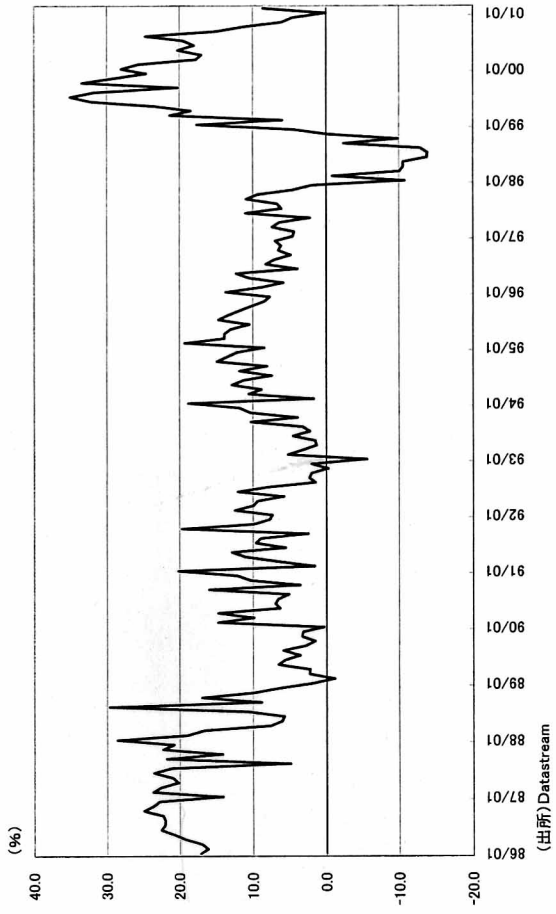
(出所)経済産業省「鉱工業生産・出荷・在庫指数速報」

日本・鉱工業生産指数(6ヶ月移動平均)

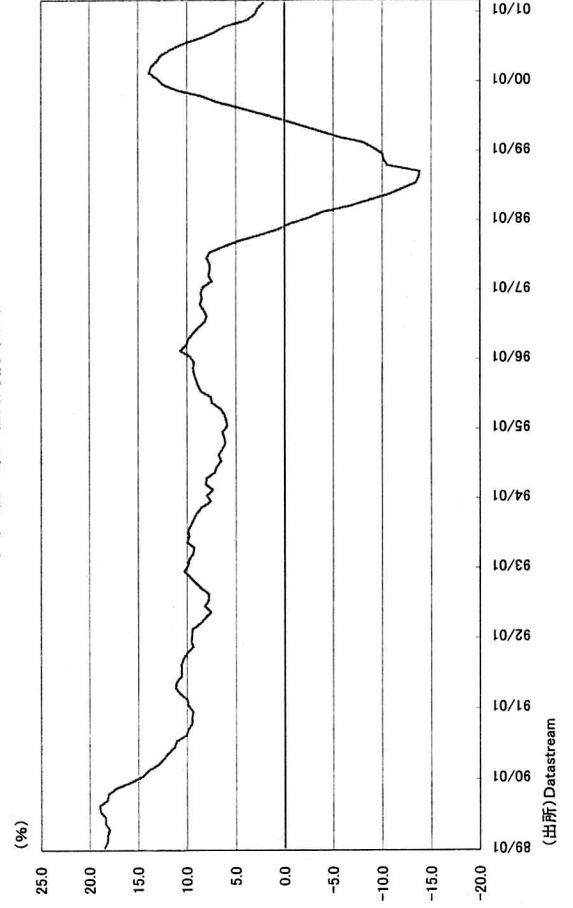


(出所)経済産業省「鉱工業生産・出荷・在庫指数速報」

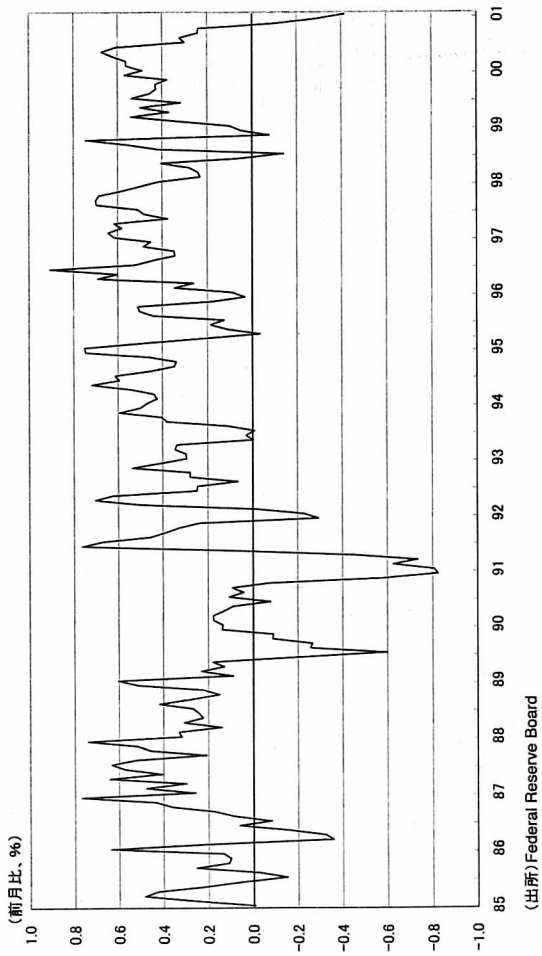
韓国・鉱工業生産(対前年比)



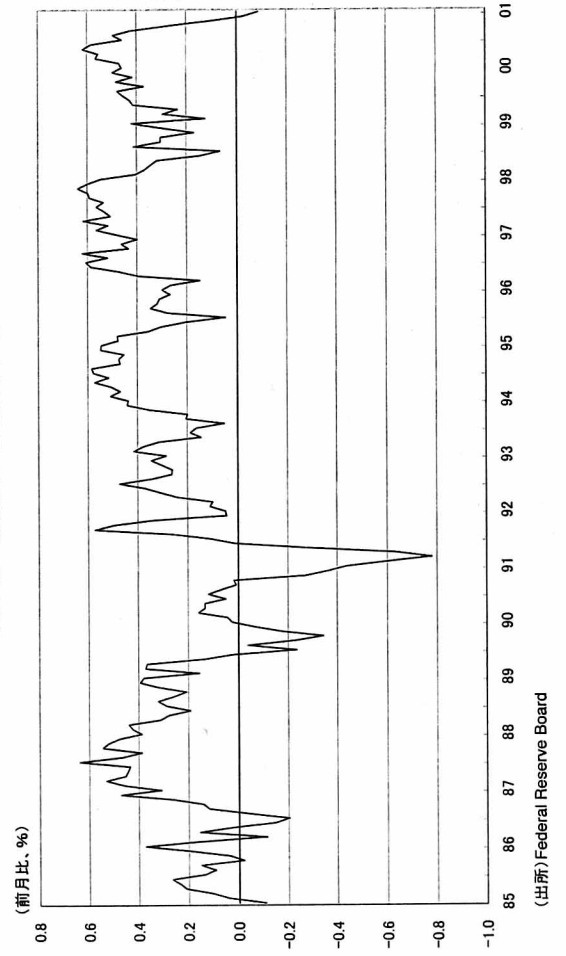
タイ・鉱工業生産(対前年比)



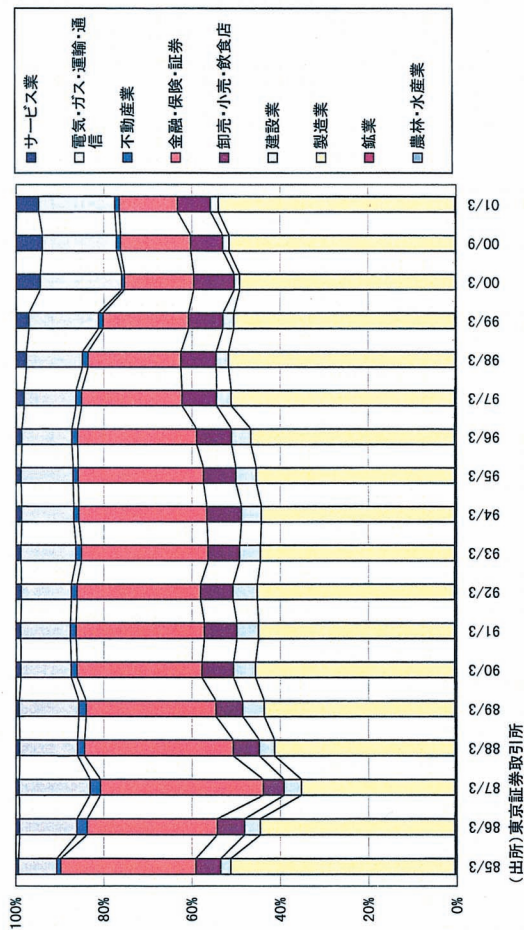
米国・鉱工業生産(3ヶ月移動平均)



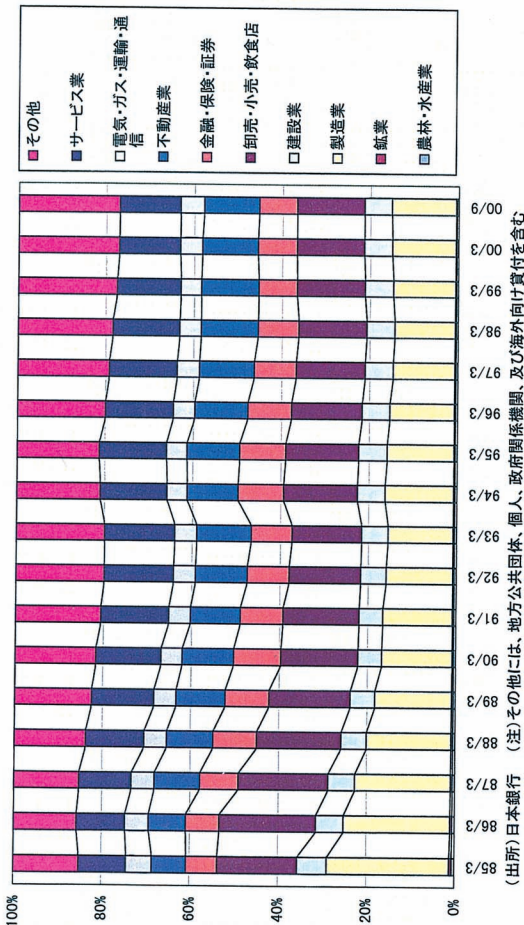
米国・鉱工業生産(6ヶ月移動平均)



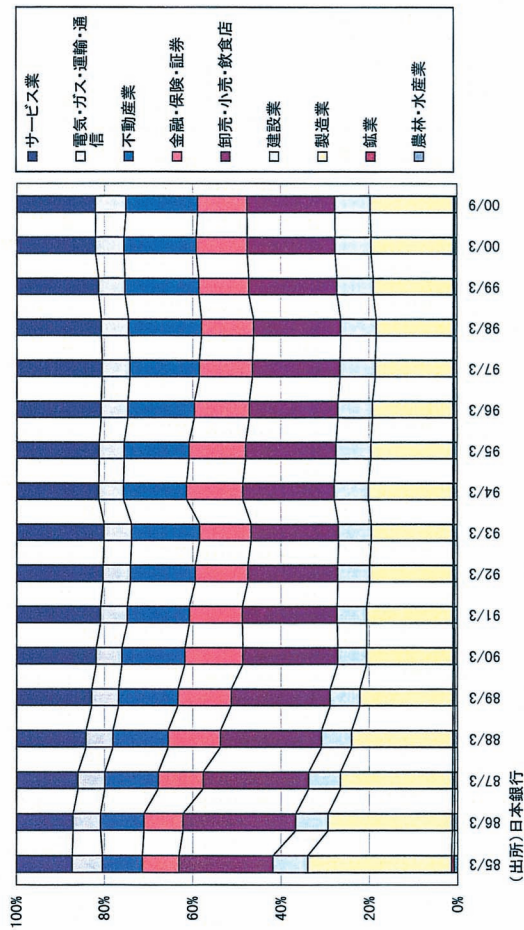
業種別時価総額構成の推移(東証一部)



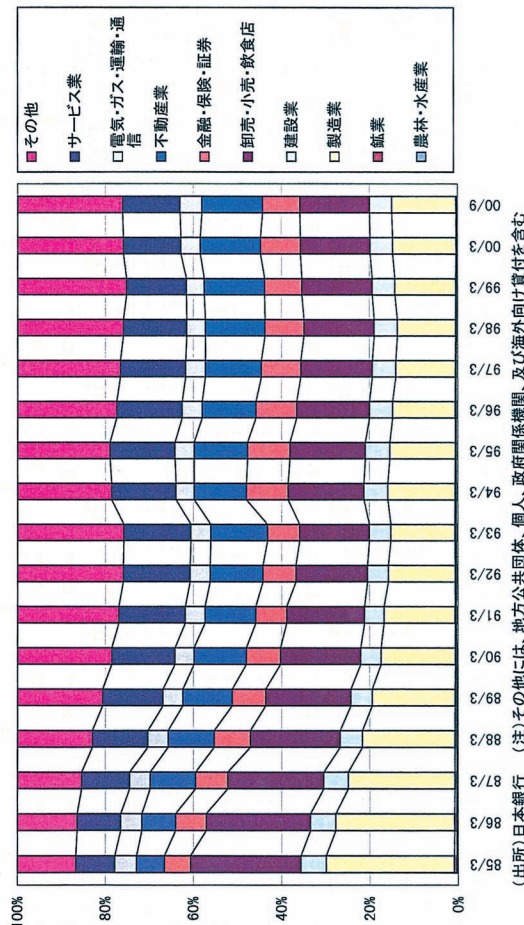
業種別貸出残高の推移(国内銀行勘定・対国内外向け)



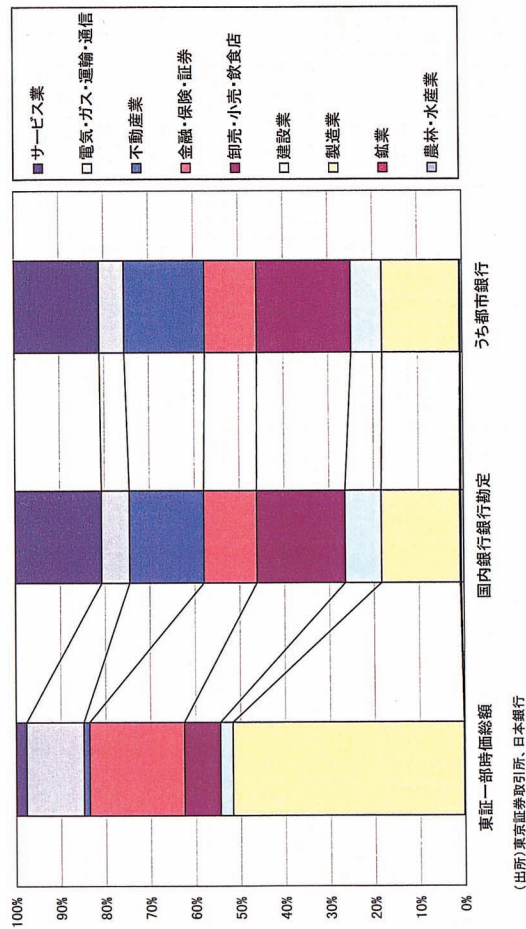
業種別貸出残高の推移(国内銀行勘定・対国内産業向け)



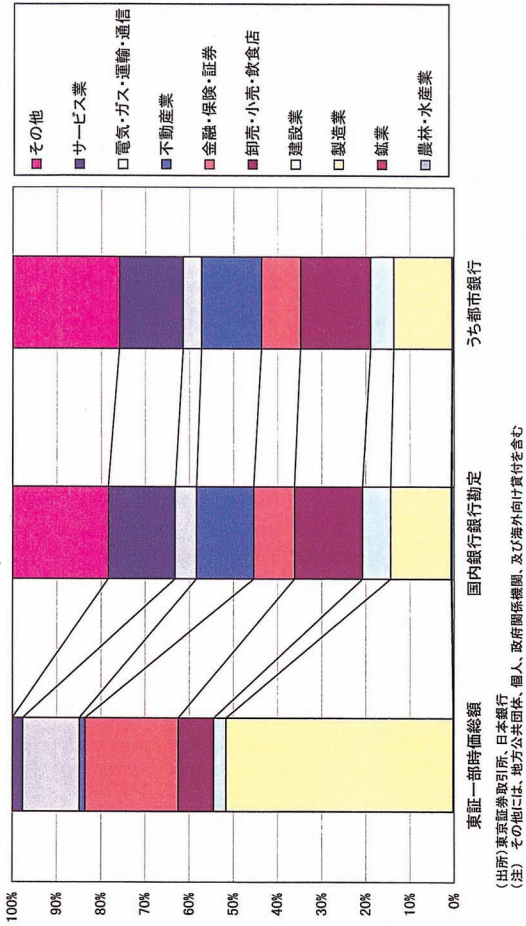
業種別貸出残高の推移(都市銀行・対国内外向け)



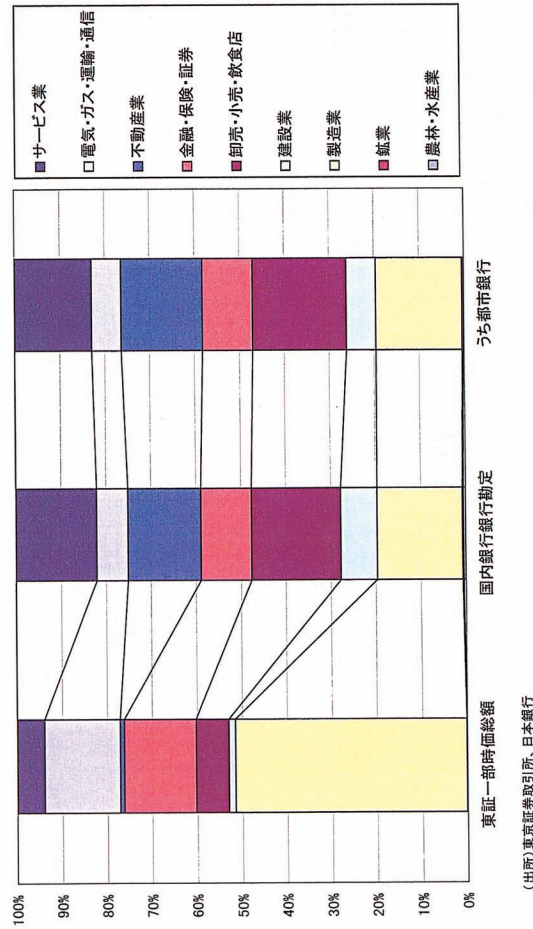
東証一部時価総額構成と国内銀行の貸出構成<対国内産業向け>(98/3末)



東証一部時価総額構成と国内銀行の貸出構成<対国内外向け>(98/3末)



東証一部時価総額構成と国内銀行の貸出構成<対国内産業向け>(00/9末)



東証一部時価総額構成と国内銀行の貸出構成<対国内外向け>(00/9末)

